



# Library Leadership and Gender

---

Expectations and Lived Experiences

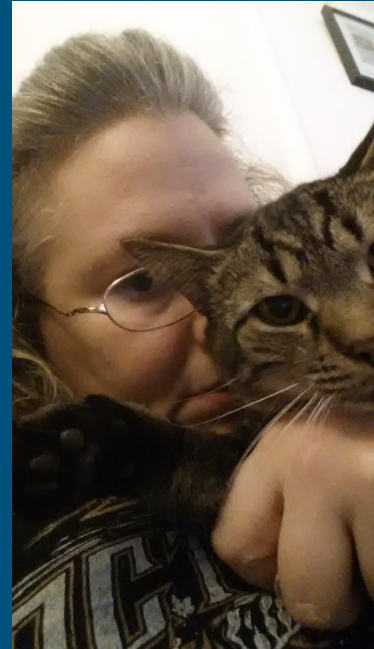
Session hashtag: #libleadgender



# Who We Are

---

Jessica Olin  
Director of the Robert H. Parker Library  
Wesley College  
@olinj



# Who We Are

---

April M. Hathcock  
Scholarly Communication Librarian  
NYU  
@AprilHathcock



# Who We Are

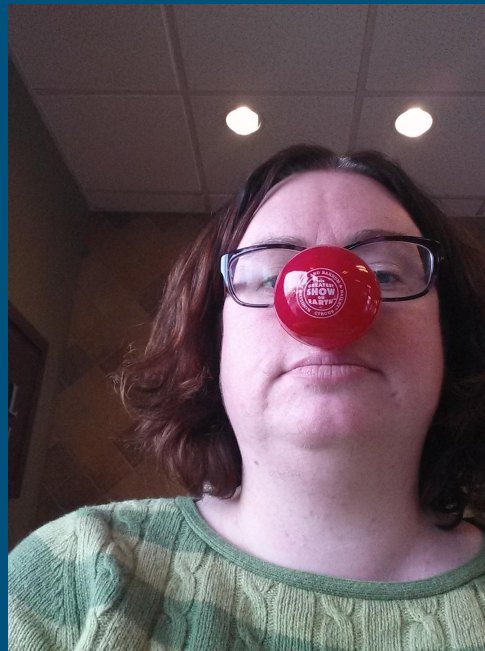
---

Erin Leach

Head of Serials Cataloging

University of Georgia Libraries

@erinaleach



# Who We Are

---

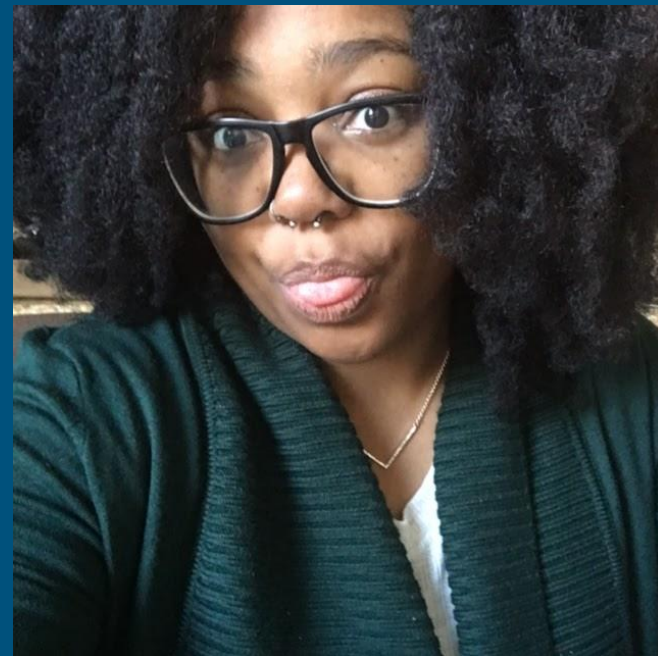
Maura Smale  
Chief Librarian  
NYC College of Tech, CUNY  
@mauraweb



# Who We Are

---

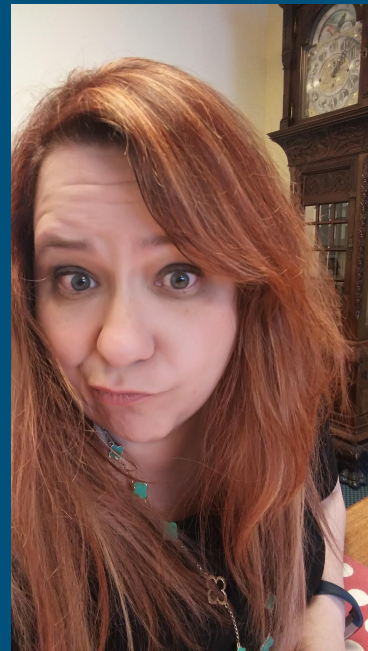
Jennifer Brown  
Emerging Technologies Coordinator  
Columbia University  
@jeninthelib



# Who We Are

---

Michelle Millet  
Director of the Grasselli Library  
John Carroll University  
@winelibrarian



# Think, Pair, & Share

---

- Do you consider yourself a leader? Why or why not?
- Have you found yourself coming up against gender stereotypes at work? In what ways?
- Are there actions you've taken to resist or confront challenges you've faced with gender norms at work? Have they been successful?
- How do the intersections of other facets of your identity (race, ethnicity, class, sexuality, religion, disability, etc.) affect your gender expectations and realities in leadership?

PLEASE ONLY SHARE IF YOU ARE COMFORTABLE



# Your Questions & Our Answers

---



# Moving Forward!

---

Key Takeaway: Keep working on this!

- What can you do to help yourself? Others?
- What can we (the panel) do to support you?
- How can we empower ourselves and others?



# Questions later?

---

Jessica Olin: [jessica.olin@wesley.edu](mailto:jessica.olin@wesley.edu)

April Hathcock: [april.hathcock@nyu.edu](mailto:april.hathcock@nyu.edu)

Erin Leach: [eleach@uga.edu](mailto:eleach@uga.edu)

Maura Smale: [msmale@citytech.cuny.edu](mailto:msmale@citytech.cuny.edu)

Jennifer Brown: [jcb2257@columbia.edu](mailto:jcb2257@columbia.edu)

Michelle Millet: [mmillet@jcu.edu](mailto:mmillet@jcu.edu)